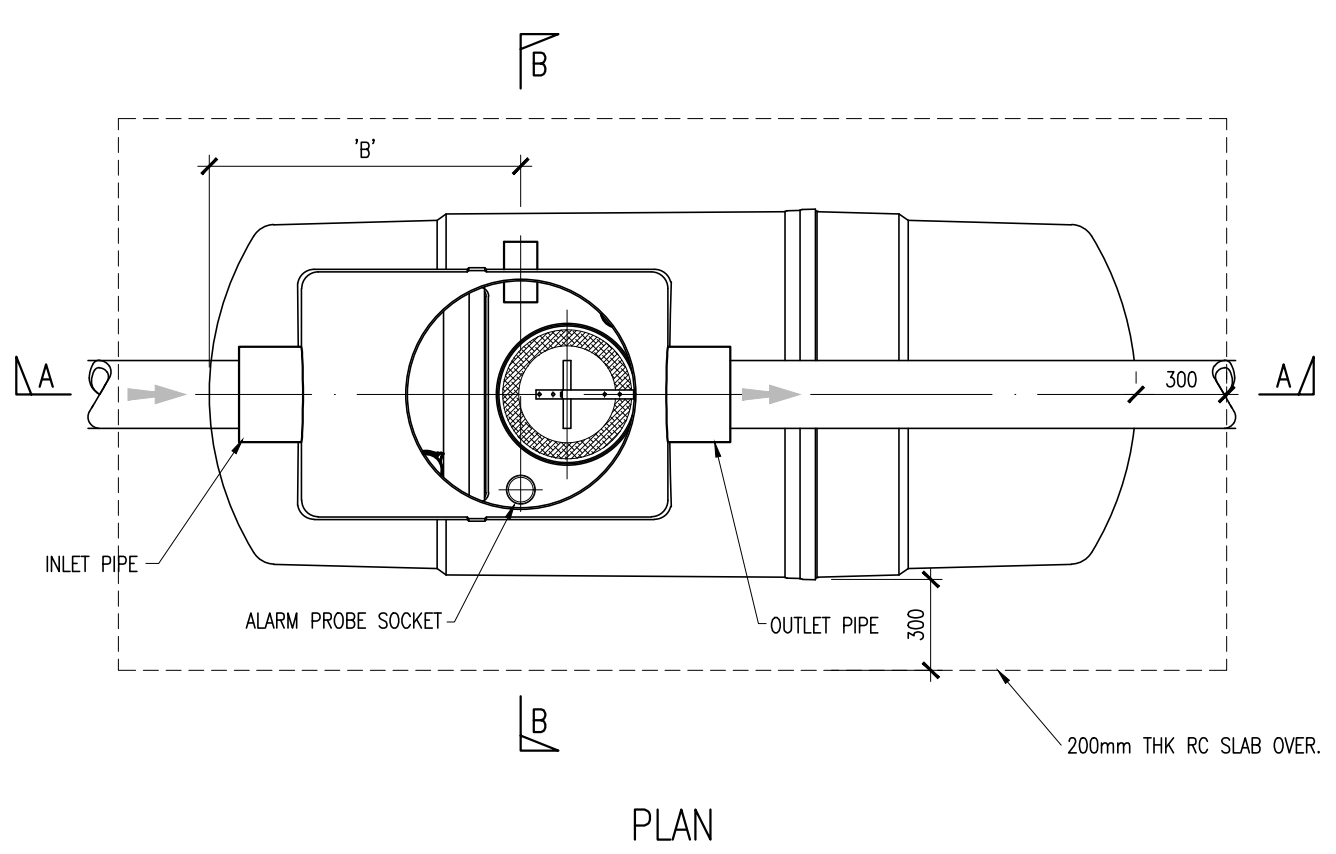
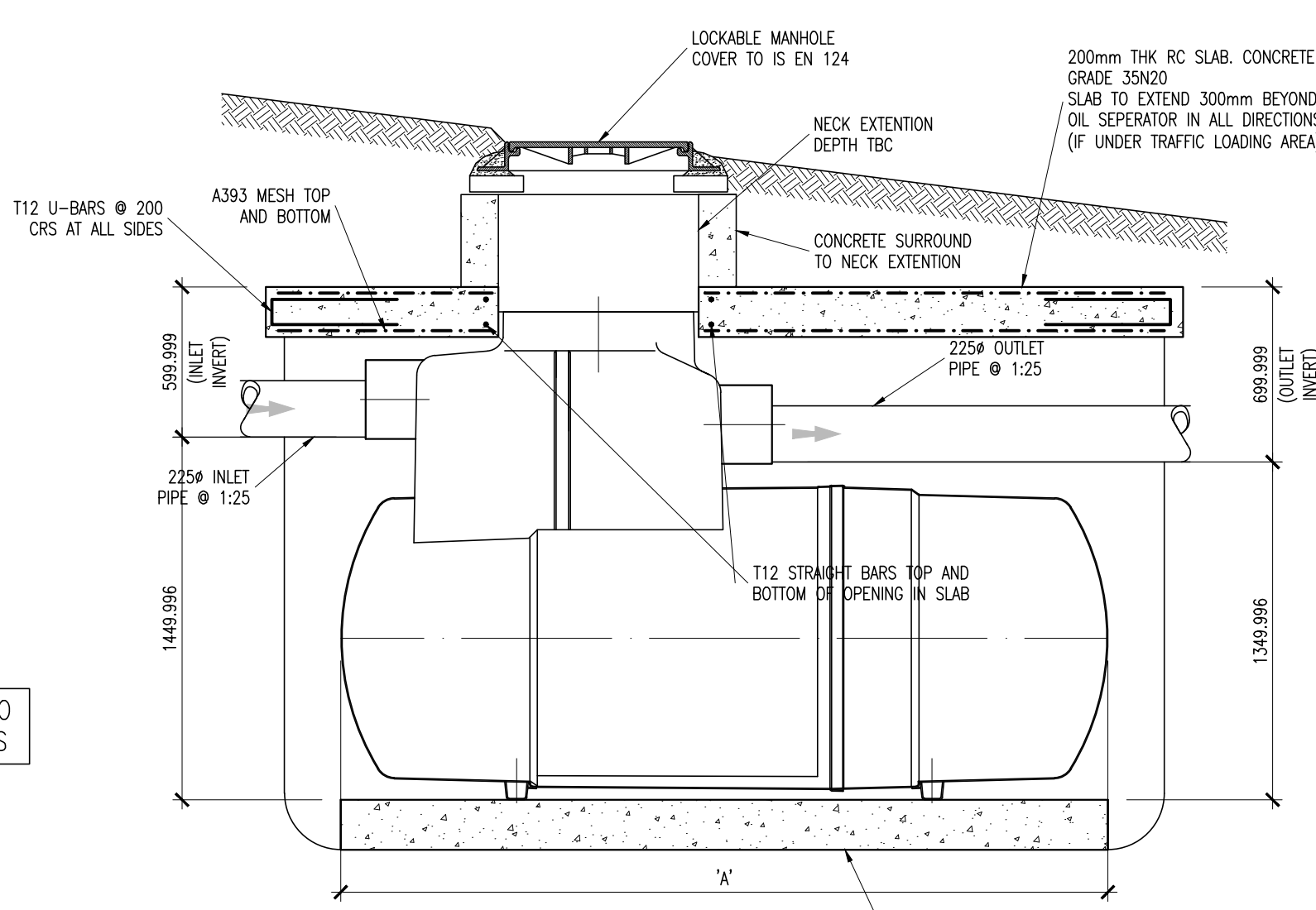


- NOTES:
- C20/25 CONCRETE TO HAVE A MINIMUM CEMENT CONTENT OF 260kg/m³, MAXIMUM WATER/CEMENT RATIO OF 0.65 AND SLUMP CLASS S2.
 - C25/30 CONCRETE TO HAVE A MINIMUM CEMENT CONTENT OF 280kg/m³, MAXIMUM WATER/CEMENT RATIO OF 0.65 AND SLUMP CLASS S2.
 - C40/50 CONCRETE TO HAVE A MINIMUM CEMENT CONTENT OF 400kg/m³, MAXIMUM WATER/CEMENT RATIO OF 0.45 AND SLUMP CLASS S3.
 - WHERE CLASS 6F1/6F2 CAPPING MATERIAL IS PROPOSED WITHIN 500mm OF CONCRETE OR STEEL, CLASS 6N TO BE USED INSTEAD.

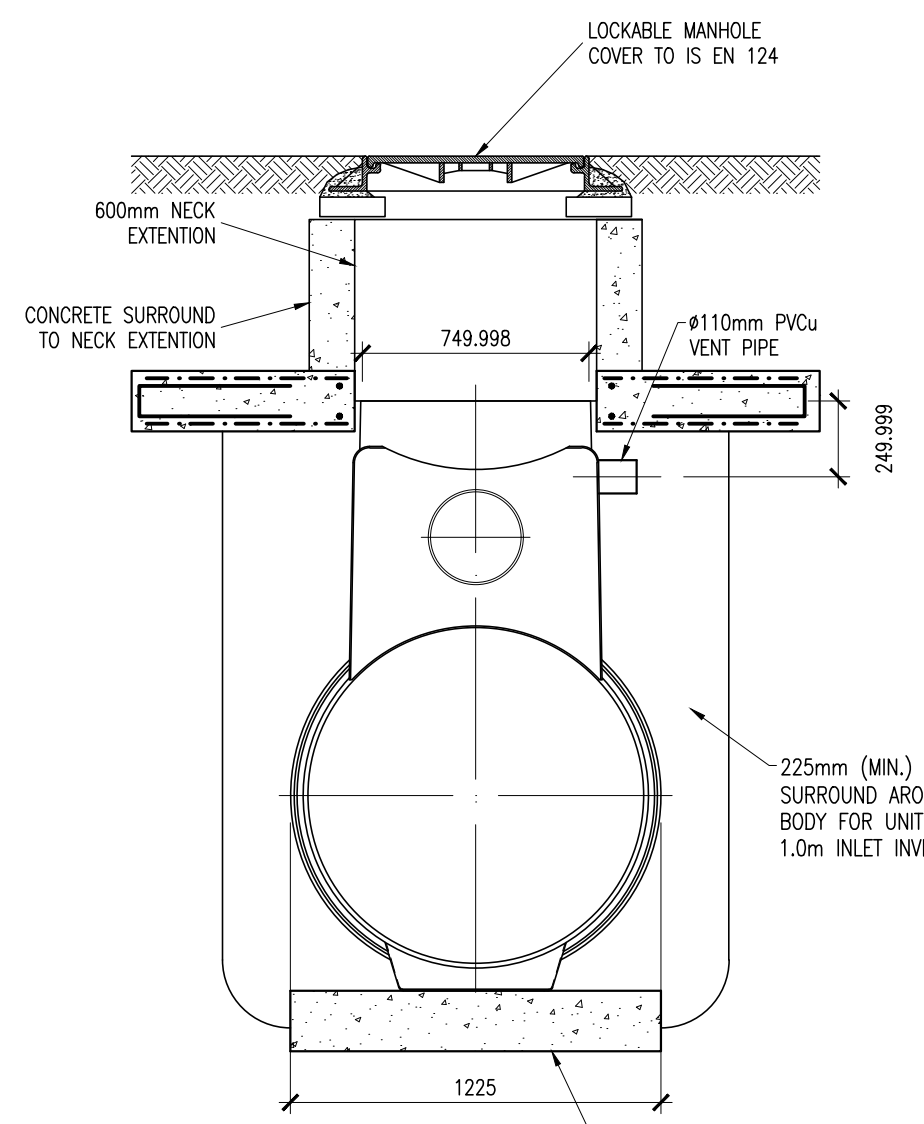
NOTE:
ALL WORKS & SPECIFICATIONS TO BE UNDERTAKEN IN ACCORDANCE WITH:
• TII SPECIFICATION FOR ROADWORKS
• GREATER DUBLIN CODE OF PRACTICE FOR DRAINAGE WORKS
• RECOMMENDATIONS FOR SITE DEVELOPMENT WORKS



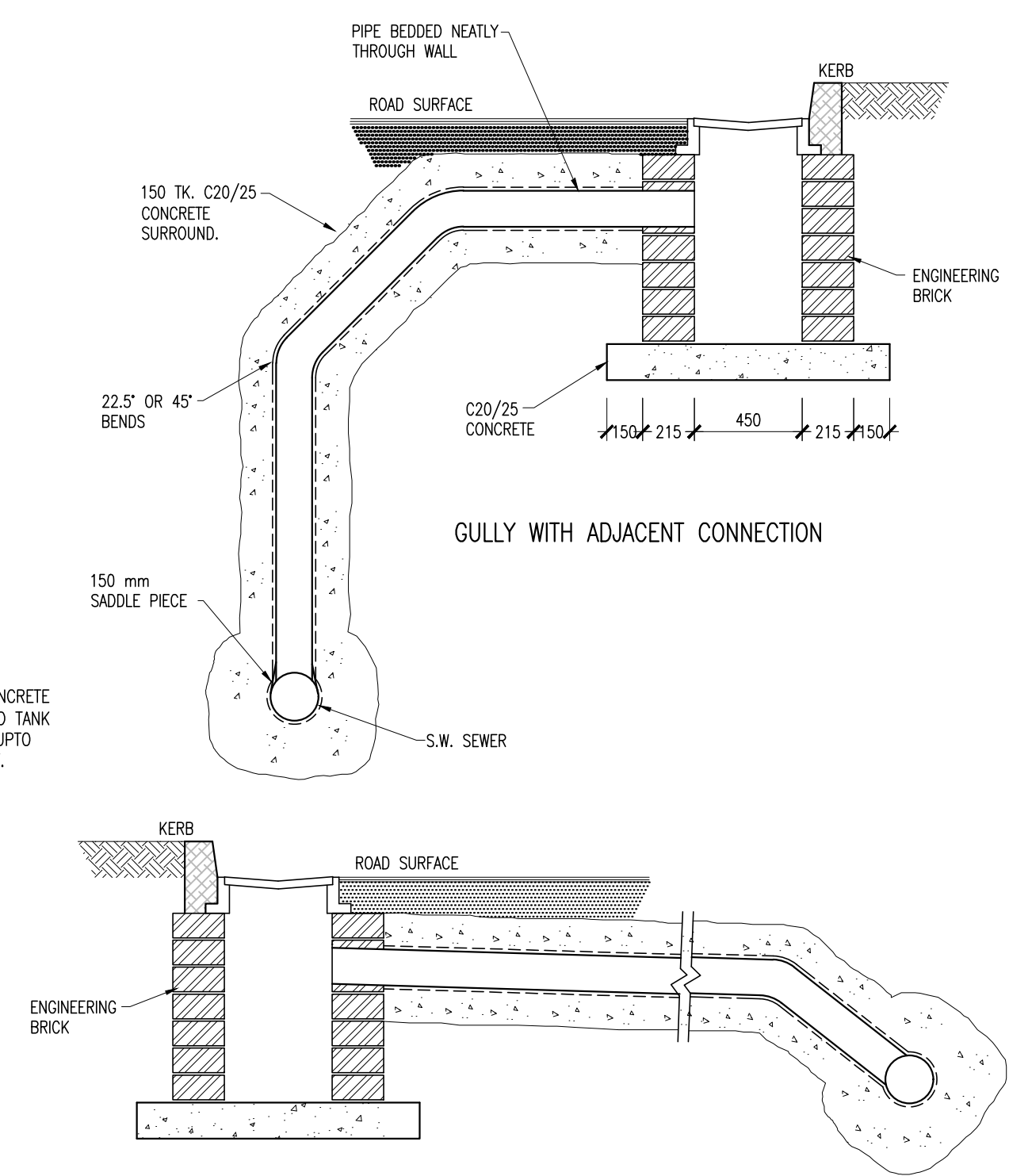
NOTE: FOR UNIT DIMENSIONS REFER TO MANUFACTURERS BROCHURE & DETAILS



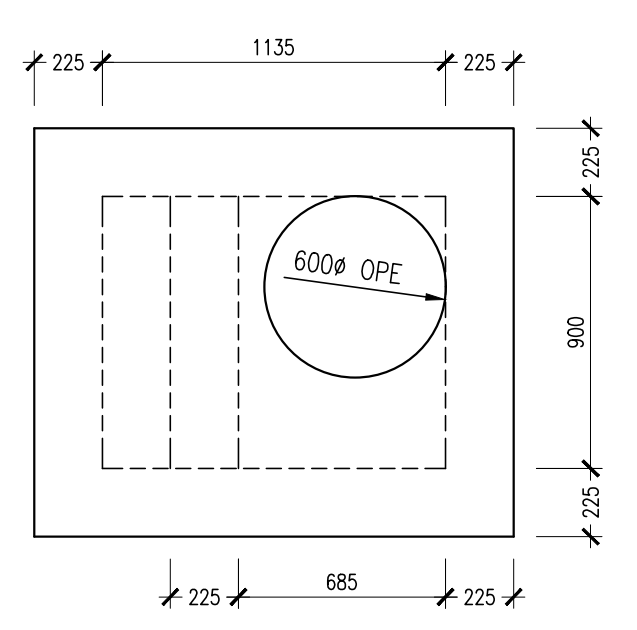
SECTION A-A
PETROL INTERCEPTOR DETAIL
SCALE 1:25



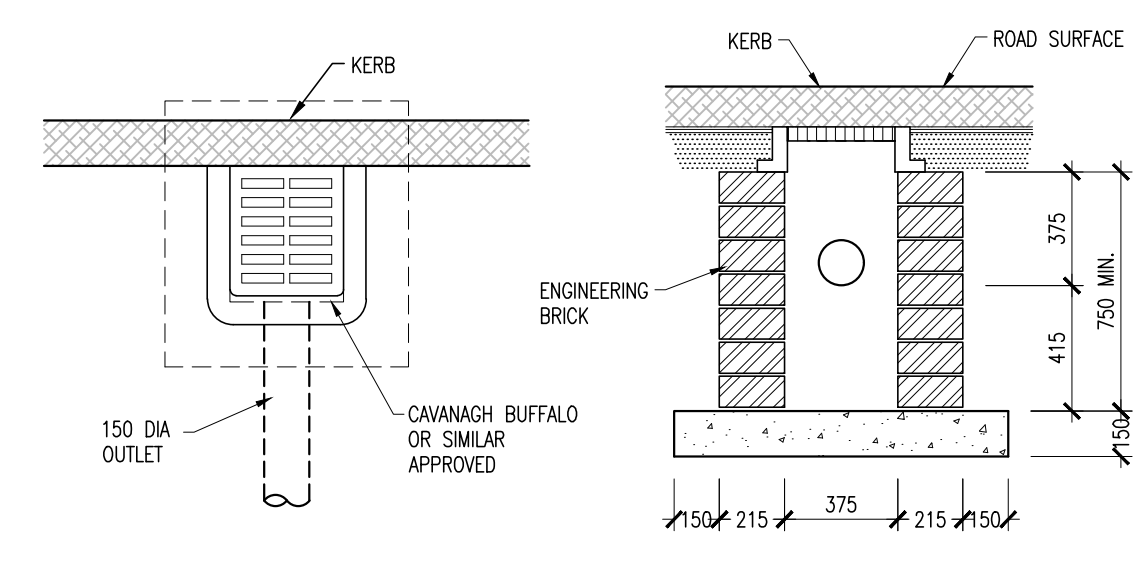
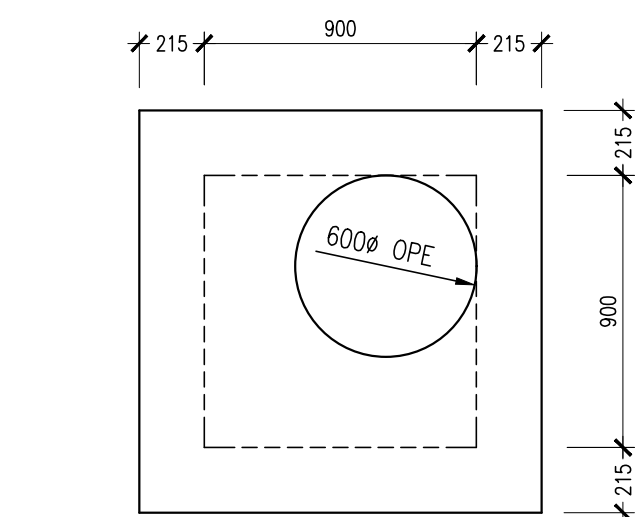
SECTION B-B



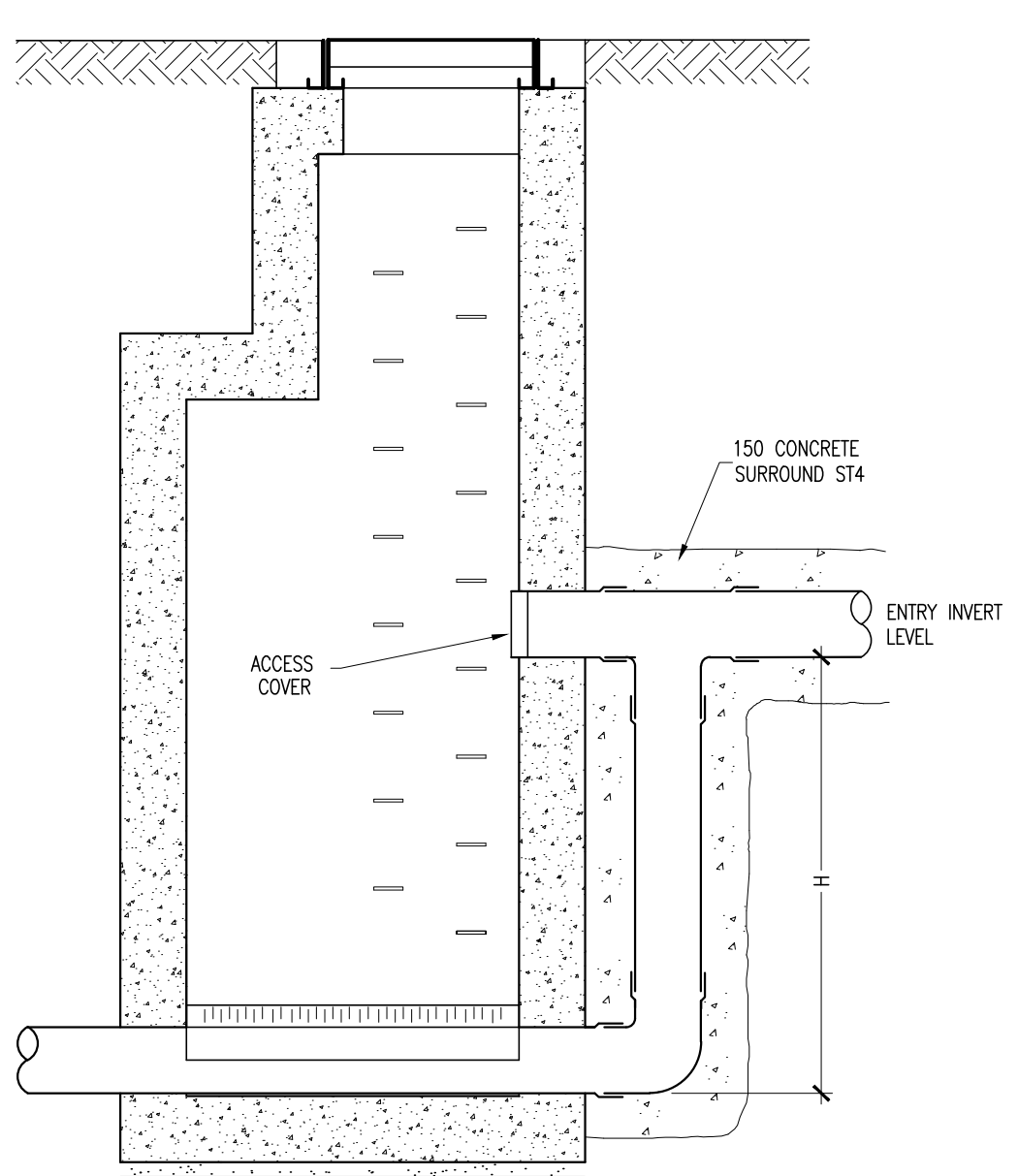
GULLY WITH CONNECTION ON OPPOSITE SIDE OF ROAD



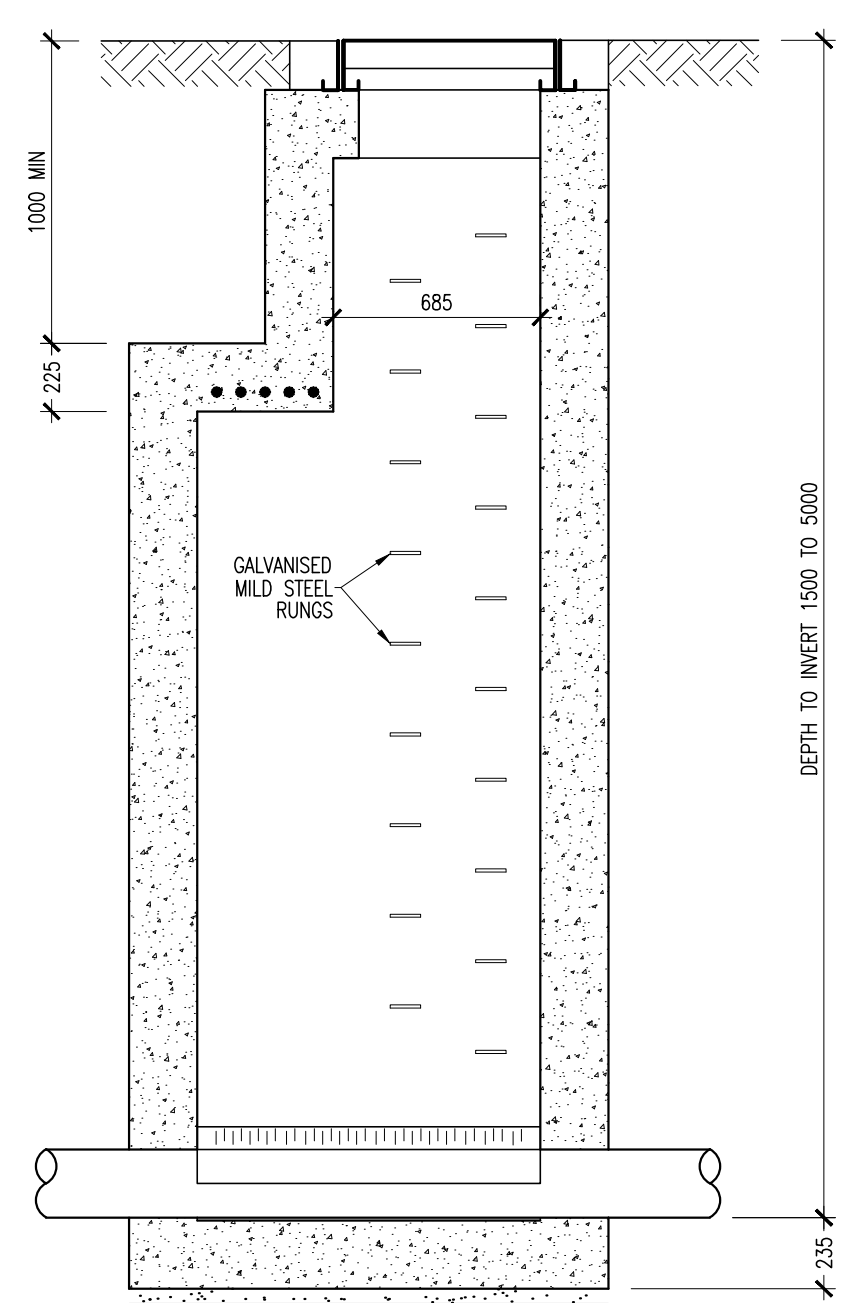
INLET DIA.mm	H MIN.mm
225	600
300	600
375	750
450	750
525	750
600	750
750	750



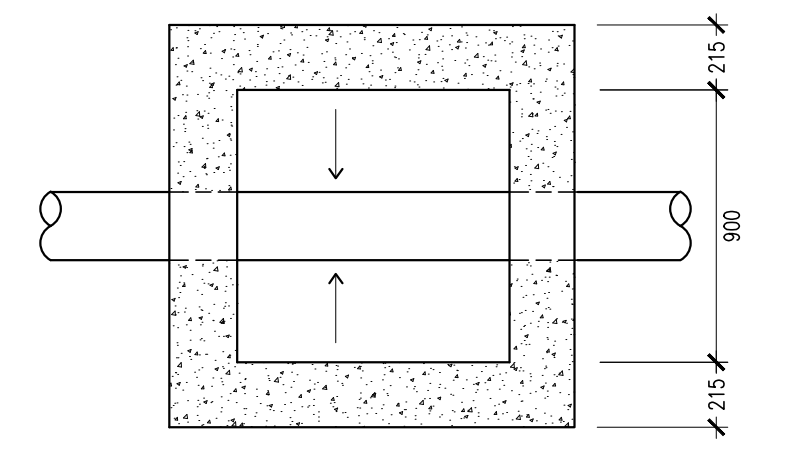
IN-SITU ROAD GULLY DETAILS



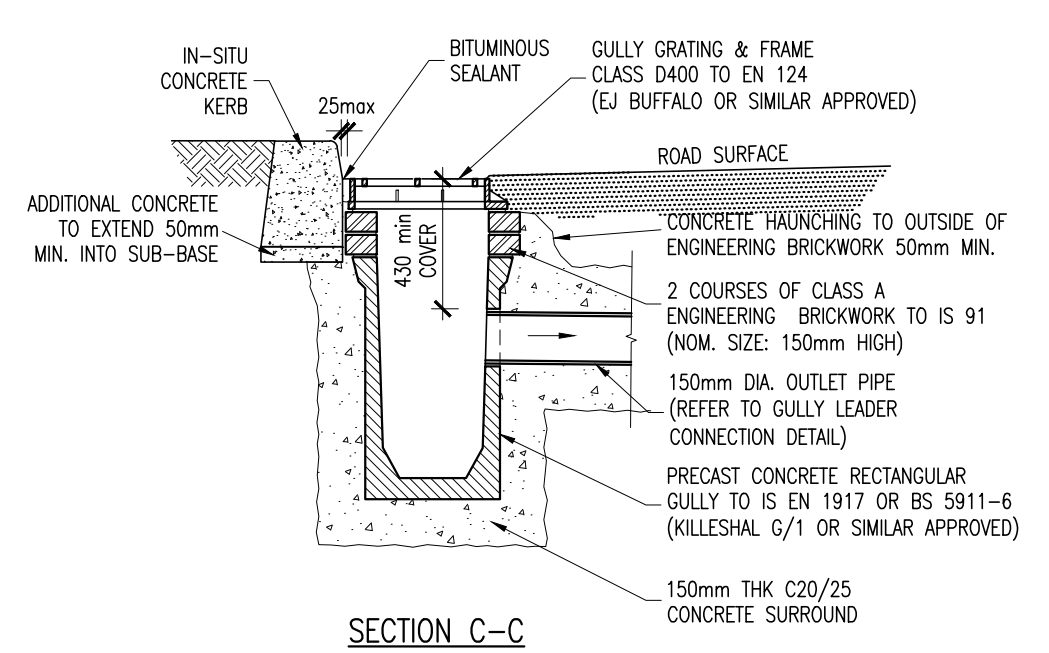
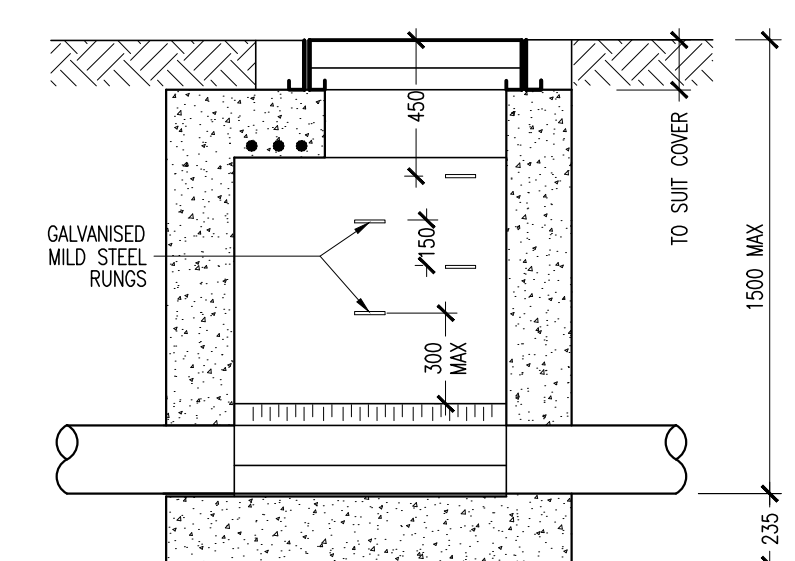
BACKDROP MANHOLE



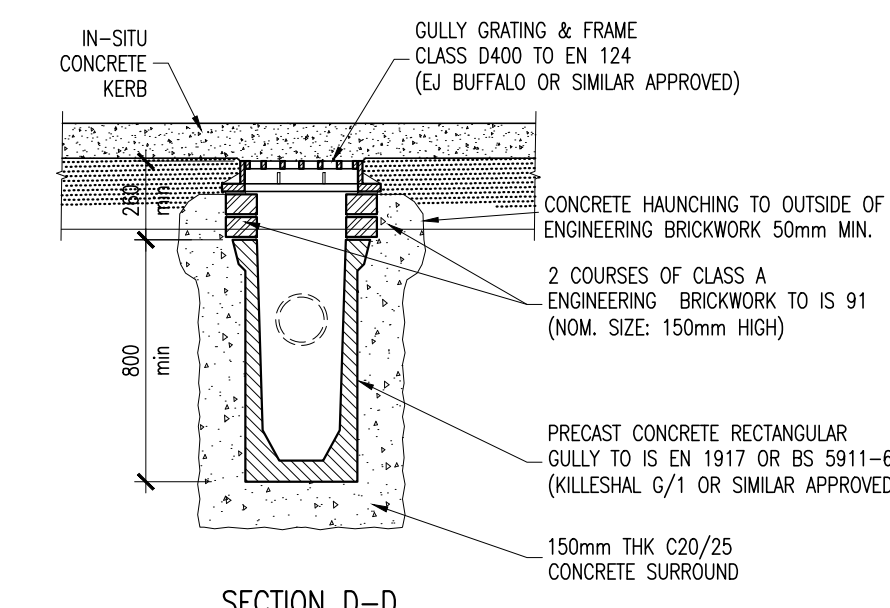
DEEP MANHOLE



SHALLOW MANHOLE



SECTION C-C



SECTION D-D

RECTANGULAR PRECAST ROAD GULLY DETAIL

PRIVATE DRAINAGE
[ALTERNATIVE IN-SITU REINFORCED CONCRETE MANHOLE DETAILS]
(STRUCTURAL ENGINEER TO PROVIDE CONSTRUCTION DETAILS)

REV.	DATE	DESCRIPTION	BY	CHKD.
PLANNING				
DESIGNED	JBK	PREPARED	APW	
DATE	NOV 2017	CHECKED	JBK	

DBFL
Dublin Office: Ormond House, Upper Ormond Quay, Dublin 7, Ireland. PHONE +353 1 400 4000 FAX +353 1 400 4050
Waterford Office: Unit 2, The Chandlery, 1-2 O'Connell Street, Waterford, Ireland. PHONE +353 51 300 500 FAX +353 51 844 913
DBFL Consulting Engineers email: info@dbfl.ie site: www.dbfl.ie

PROJECT
PROPOSED RESIDENTIAL DEVELOPMENT AT GLENCAIRN, MURPHYSTOWN WAY, DUBLIN 18

DRG. TITLE
STANDARD DETAILS SHEET 3 OF 4

ARCHITECT
O'MAHONY PIKE ARCHITECTS

SCALE	AS SHOWN @A1	FILE REF.	170074-3010
DRG. NO.	170074-3013		