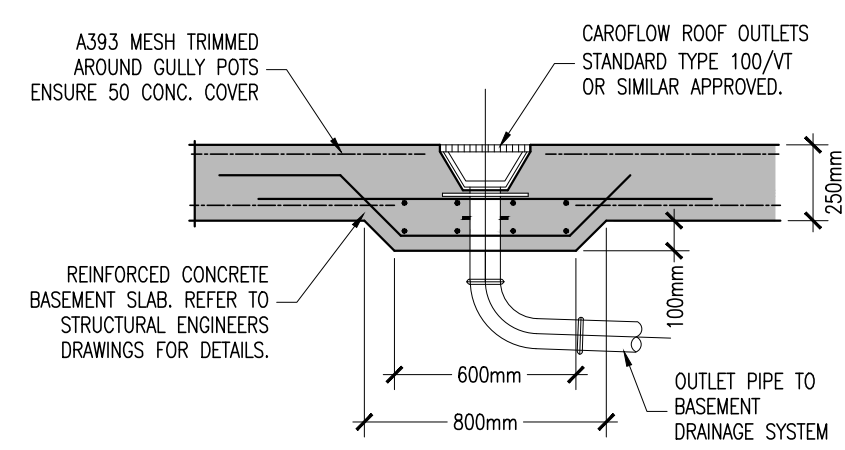


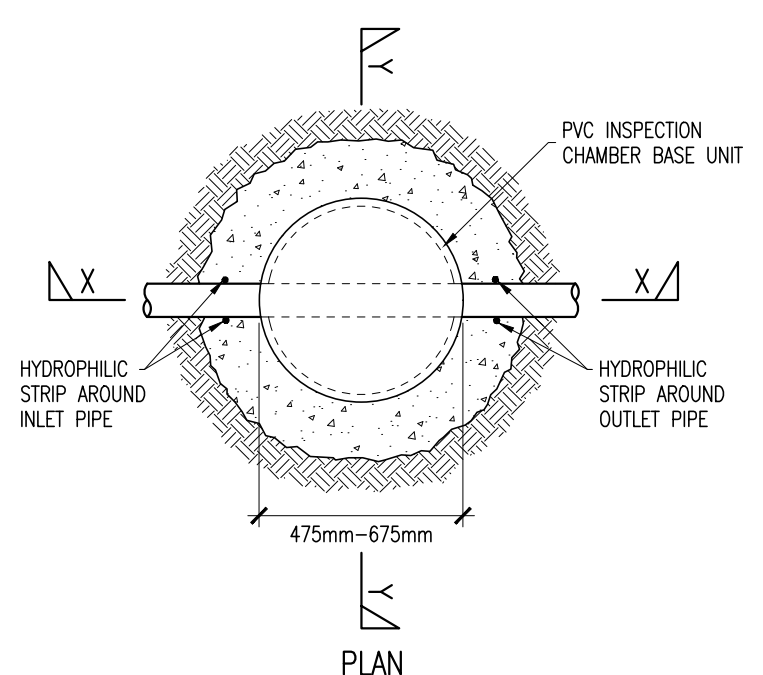
- NOTES:
- C20/25 CONCRETE TO HAVE A MINIMUM CEMENT CONTENT OF 260kg/m<sup>3</sup>, MAXIMUM WATER/CEMENT RATIO OF 0.65 AND SLUMP CLASS S2.
  - C25/30 CONCRETE TO HAVE A MINIMUM CEMENT CONTENT OF 280kg/m<sup>3</sup>, MAXIMUM WATER/CEMENT RATIO OF 0.65 AND SLUMP CLASS S2.
  - C40/50 CONCRETE TO HAVE A MINIMUM CEMENT CONTENT OF 400kg/m<sup>3</sup>, MAXIMUM WATER/CEMENT RATIO OF 0.45 AND SLUMP CLASS S3.
  - WHERE CLASS 6F1/6F2 CAPPING MATERIAL IS PROPOSED WITHIN 500mm OF CONCRETE OR STEEL, CLASS 6N TO BE USED INSTEAD.

NOTE:  
ALL WORKS & SPECIFICATIONS TO BE UNDERTAKEN IN ACCORDANCE WITH:  
• TII SPECIFICATION FOR ROADWORKS  
• GREATER DUBLIN CODE OF PRACTICE FOR DRAINAGE WORKS  
• RECOMMENDATIONS FOR SITE DEVELOPMENT WORKS

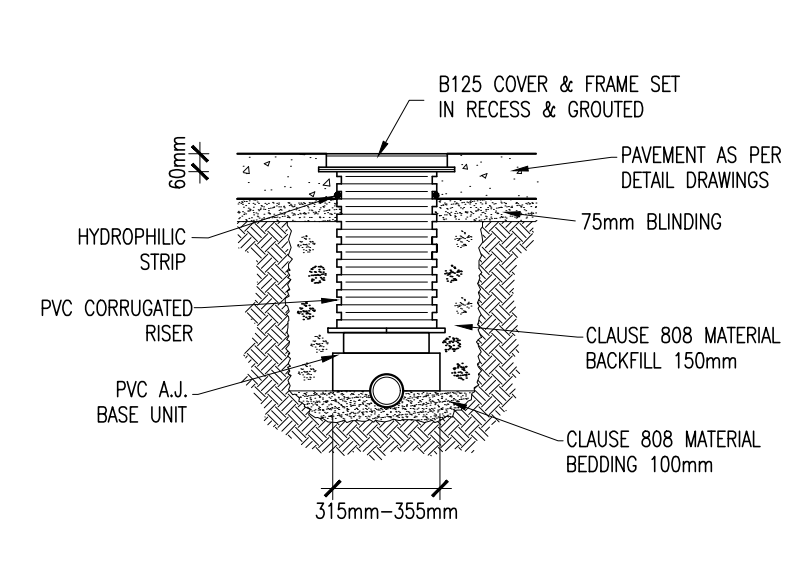
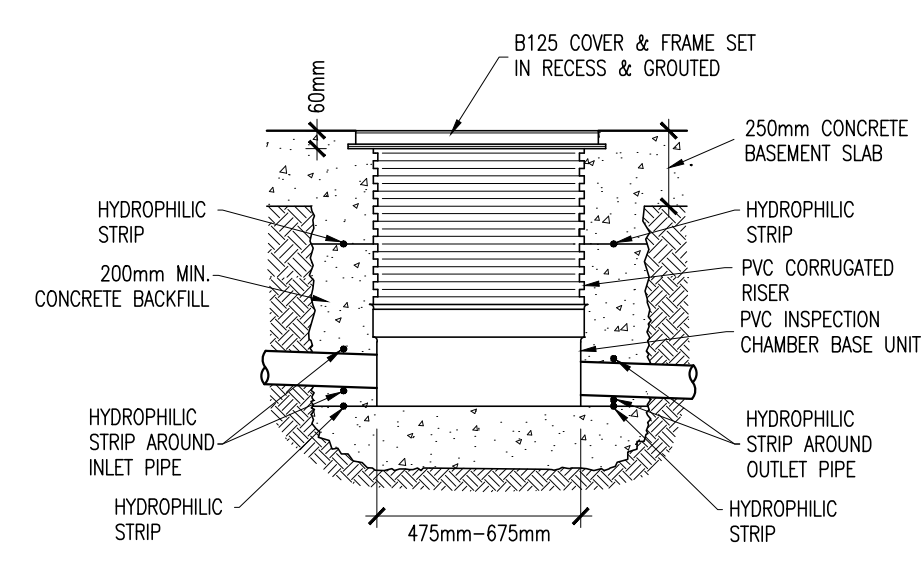
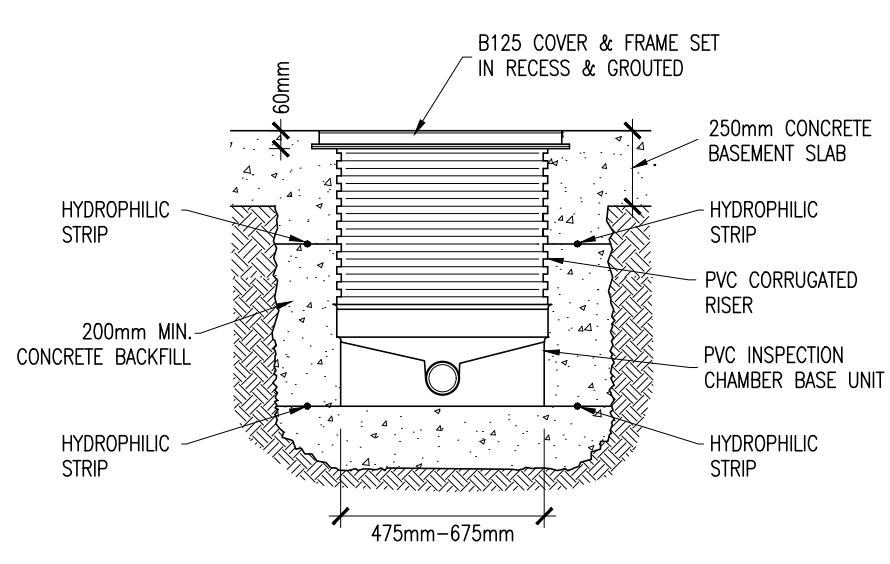
NOTE: FOR UNIT DIMENSIONS REFER TO MANUFACTURERS BROCHURE & DETAILS



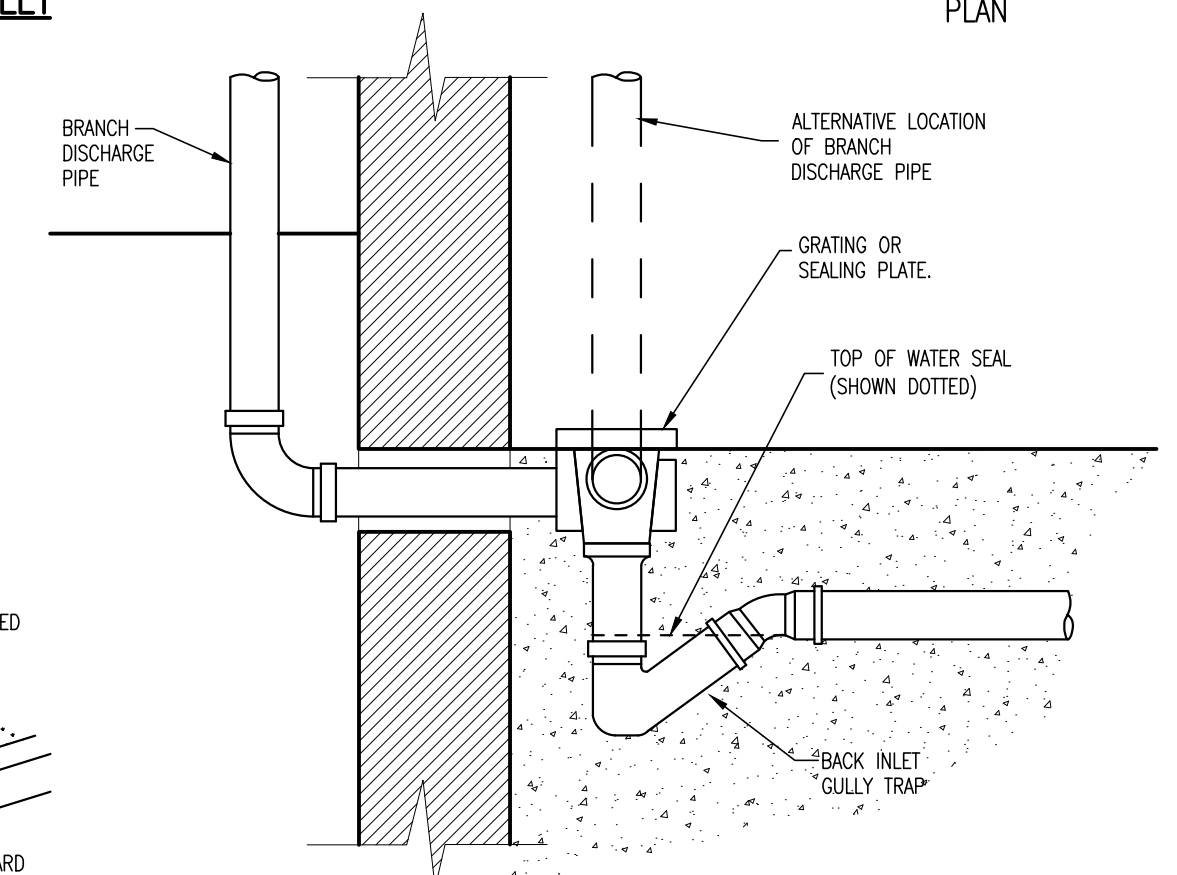
**BASEMENT SLAB GULLY**



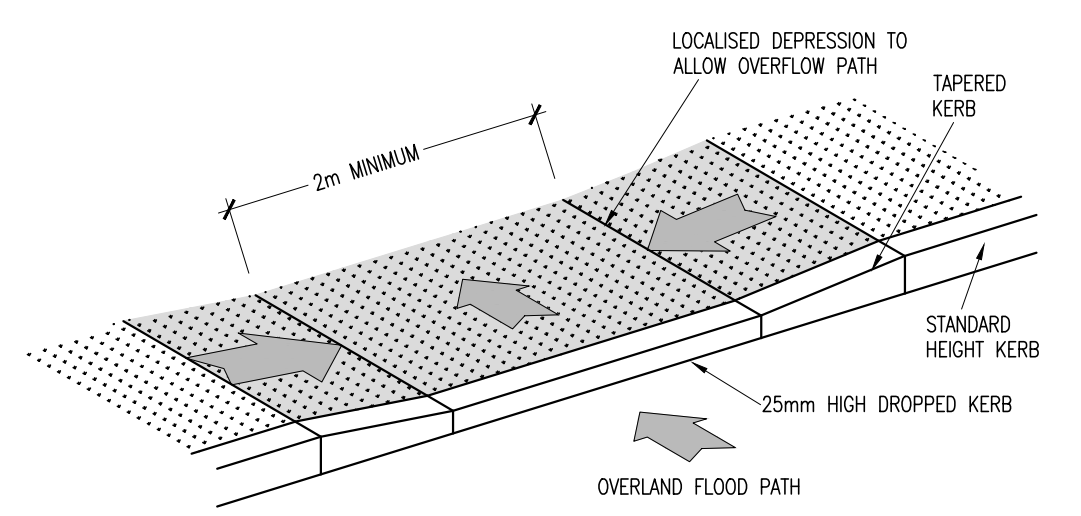
**BASEMENT INSPECTION CHAMBER DETAIL**



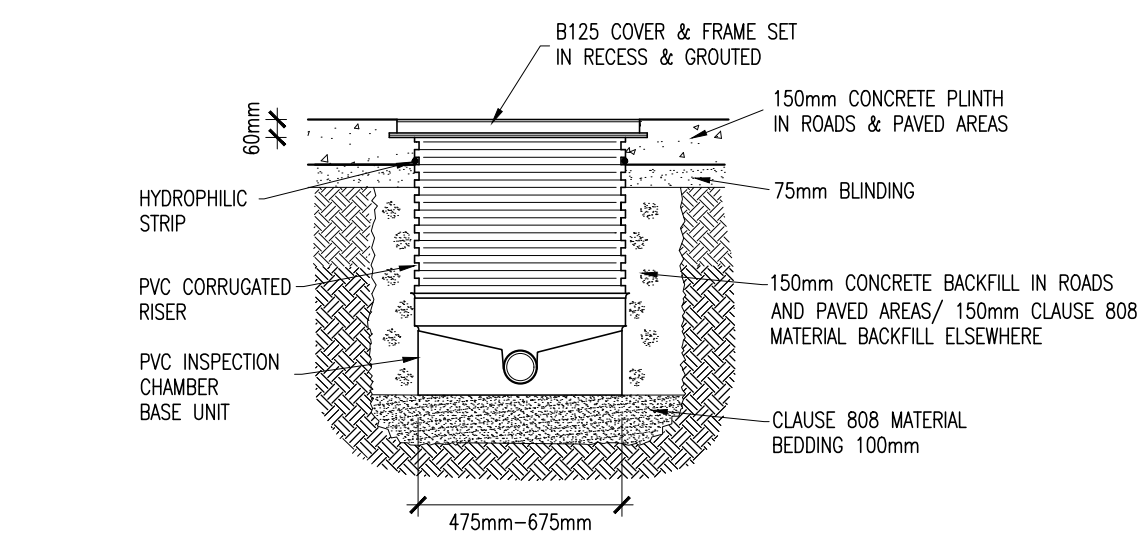
**A.J. DETAIL**



**BACK INLET GULLY TRAP**

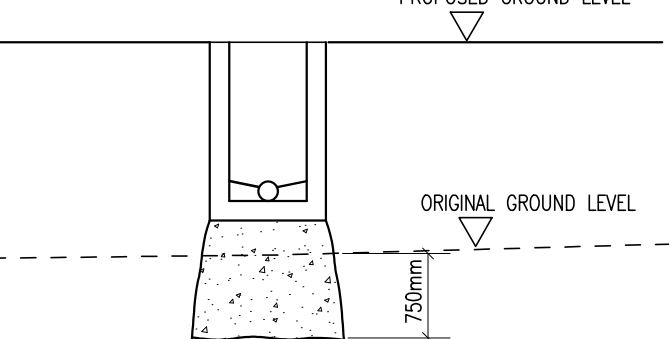


**DROPPED KERB (FOR OVERLAND FLOWPATH)**



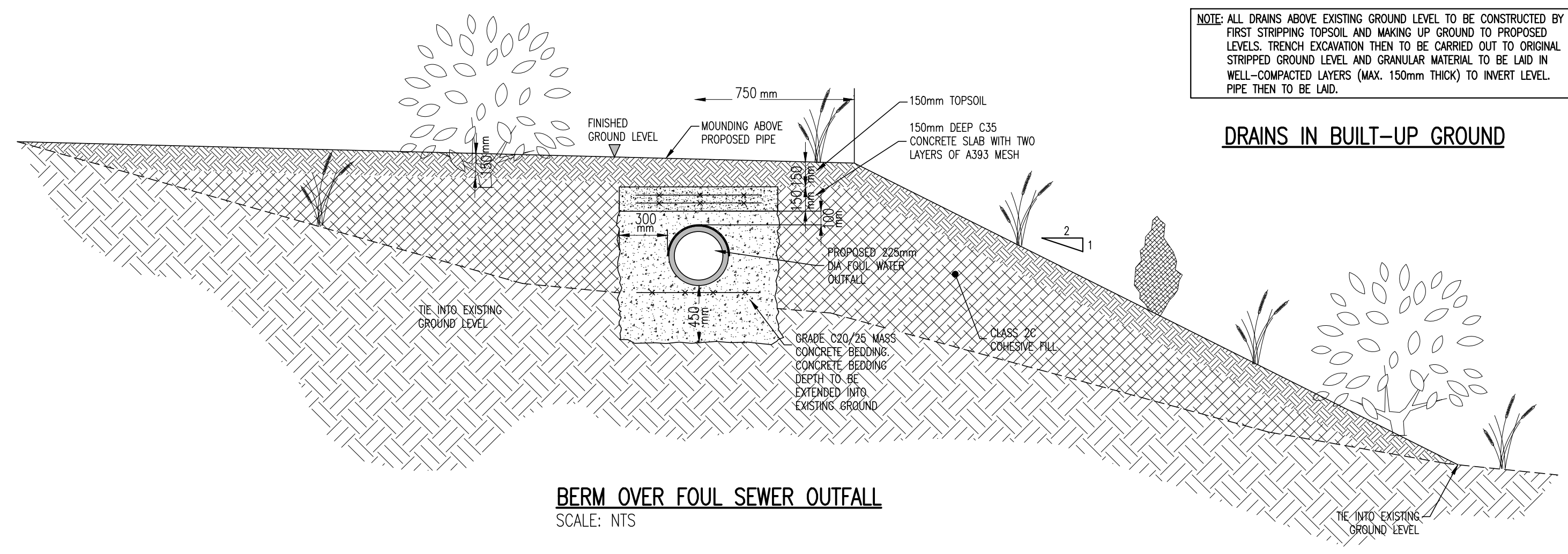
**INSPECTION CHAMBER**

MANHOLES IN BUILT-UP GROUND TO BE CONSTRUCTED OF LEAN-MIX CONCRETE WHICH IS TO BE TAKEN TO A MINIMUM DEPTH OF 750mm BELOW ORIGINAL GROUND LEVEL.

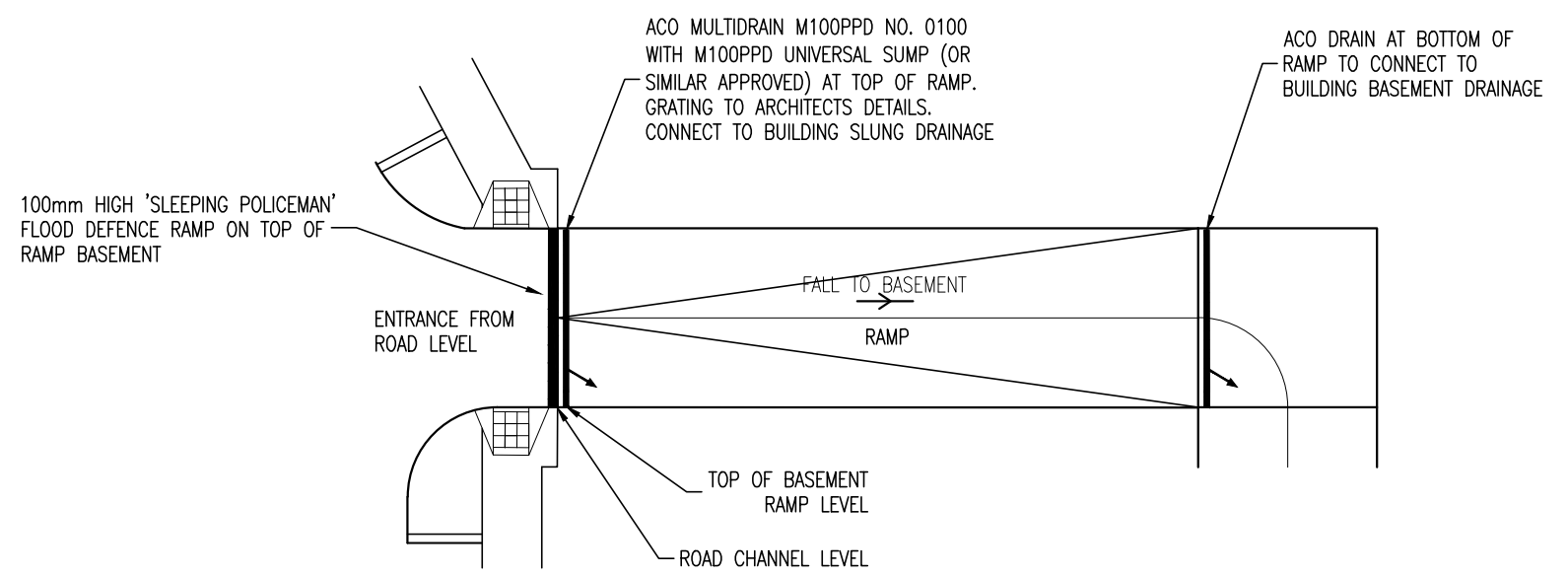


NOTE: ALL DRAINS ABOVE EXISTING GROUND LEVEL TO BE CONSTRUCTED BY FIRST STRIPPING TOPSOIL AND MAKING UP GROUND TO PROPOSED LEVELS. TRENCH EXCAVATION THEN TO BE CARRIED OUT TO ORIGINAL STRIPPED GROUND LEVEL AND GRANULAR MATERIAL TO BE LAID IN WELL-COMPACTED LAYERS (MAX. 150mm THICK) TO INVERT LEVEL. PIPE THEN TO BE LAID.

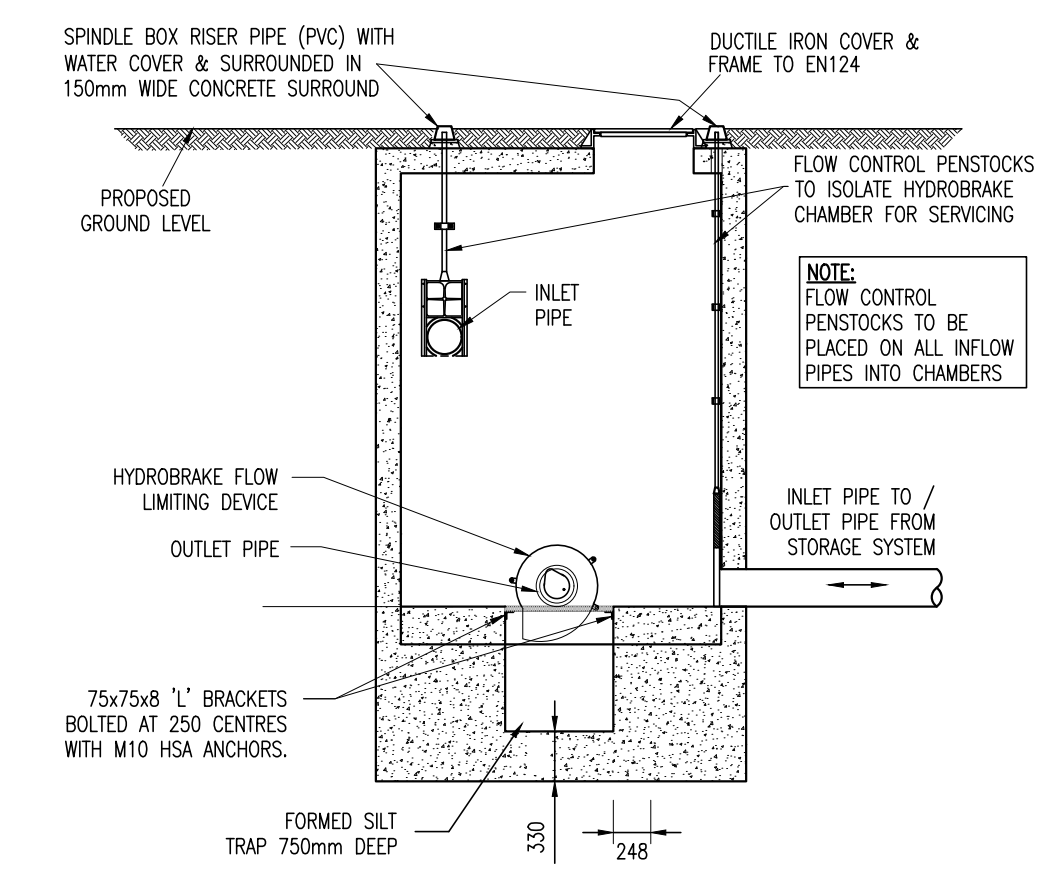
**DRAINS IN BUILT-UP GROUND**



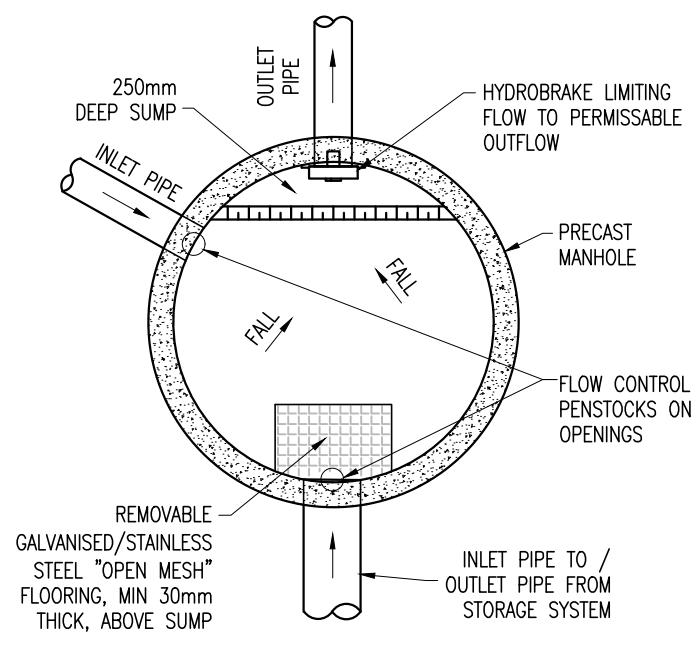
**BERM OVER FOUL SEWER OUTFALL**  
SCALE: NTS



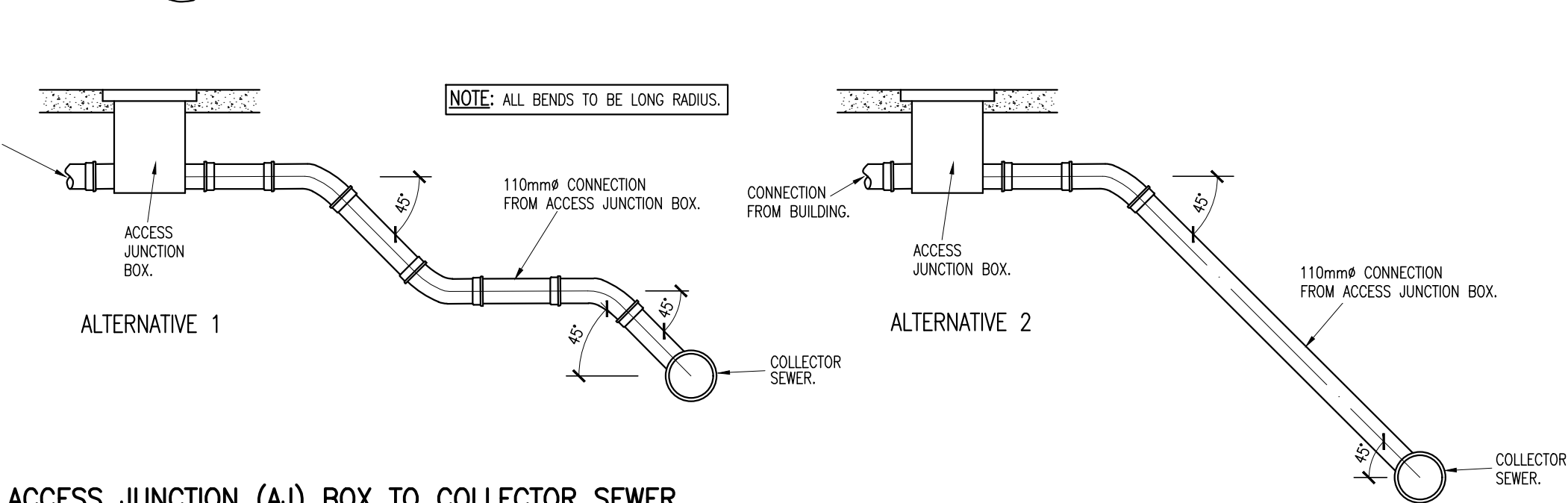
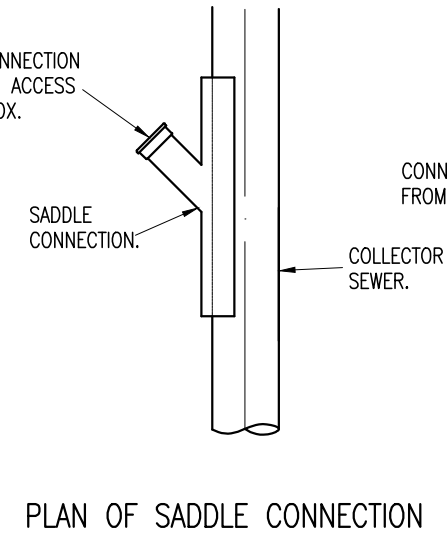
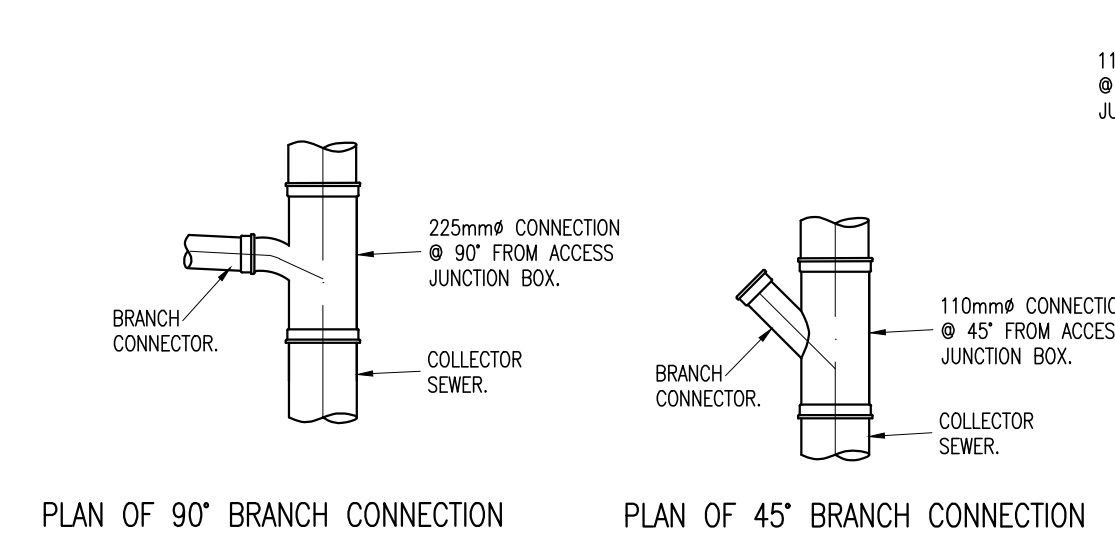
**TYPICAL RAMP TO BUILDING BASEMENT FLOOD DEFENCE DETAILS**  
SCALE: NTS



**SECTION THROUGH HYDROBRAKE MANHOLE**  
SCALE 1:50



**TYPICAL PLAN OF HYDROBRAKE MANHOLE**  
SCALE 1:50



**SADDLE CONNECTION FROM ACCESS JUNCTION (AJ) BOX TO COLLECTOR SEWER**

B	31/07/18	HYDROBRAKE MANHOLE ADDED	K.A'E	JBK
A	19/07/18	FOR IRISH WATER SUBMISSION	BY	K.J.D
REV.	DATE	DESCRIPTION	BY	CHKD.

PLANNING			
DESIGNED	JBK	PREPARED	APW
DATE	NOV 2017	CHECKED	JBK

**DBFL**  
Dublin Office: Ormond House, Upper Ormond Quay, Dublin 7, Ireland. PHONE +353 1 400 4000 FAX +353 1 400 4050  
Waterford Office Unit 2, The Chandlery, 1-2 O'Connell Street, Waterford, Ireland. PHONE +353 51 300 500 FAX +353 51 844 913  
DBFL Consulting Engineers email: info@dbfl.ie site: www.dbfl.ie

PROJECT  
**PROPOSED RESIDENTIAL DEVELOPMENT AT GLENCAIRN, MURPHYSTOWN WAY, DUBLIN 18**

DRG. TITLE  
**STANDARD DETAILS SHEET 2 OF 4**

ARCHITECT  
**O'MAHONY PIKE ARCHITECTS**

SCALE	AS SHOWN @A1	FILE REF.	170074-3010
DRG. NO.	170074-3012		B